

## Press release:

### ***Looking Awry***

November 12 - December 20, 2003

#### **curated by:**

#### **'What, How & for Whom' (WHW)**

Zagreb-based curator collective: Ivet Curlin,  
Ana Dević, Natasa Ilić and Sabina Sabolović

#### Artists:

Maja Bajević (Bosnia and Herzegovina)

Igor Grubić (Croatia)

Aydan Murtezaoglu (Turkey)

Adrian Paci (Albania)

#### ***Opening reception***

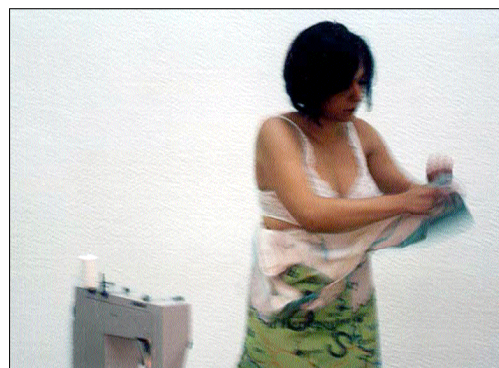
Wednesday, November 12, 6-8 pm

#### ***WHW curator talk***

Saturday, November 15, 12 pm

#### ***Gallery talk***

Wednesday, December 10, 6:30 pm



Maja Bajević, *Dresses up*, 1999, photo of performance

***Looking Awry*** presents works that are invested in the potential of repetition, re-actualization, re-staging and re-enactments of ordeals, which in order to be comprehended or resolved, need a new "awry" look. The works of Igor Grubić, Aydan Murtezaoglu, Maja Bajević and Adrian Paci have many points in common: they deal with personal topics and private perspectives revealing suppressed and invisible identities within the specific turbulent social context of countries in transition. They demonstrate both their embedment in social reality and a shift away from it. Through minimal intervention of everyday reality, they open the abysses of deepest collective and individual frustrations, fears and desires, and indirectly touch upon the problems of sex and gender, authenticity and fiction, center and margin, and issues of cultural translations.

'What, How & for Whom' (WHW) is a non-profit organization for visual culture and a curator's collective based in Zagreb, Croatia. WHW was formed in 1999 and among their projects are the following international projects/exhibitions: 'What, How and for Whom, on the occasion of the 153rd anniversary of the Communist Manifesto', 'Broadcasting: Project, dedicated to Nikola Tesla' and 'START'. Since June 2003, WHW has been running a city-owned gallery in the centre of Zagreb.

A full color brochure containing an essay by WHW will be available free of charge.  
Please contact **apexart** for further information. *Gallery hours are Tuesday to Saturday, 11-6.*

This exhibition is supported in part by The Andy Warhol Foundation for the Visual Arts.

ph. 212 431-5270

fx. 212 431-4447

e-mail: [info@apexart.org](mailto:info@apexart.org)

**apexart** is a tax-deductible 501(c)(3), not-for-profit organization