

THE
MET

Camp

NOTES ON FASHION

Through Sept 8 ▶

GUCCI | CONDÉ NAST



MAY 28, 2019
BY CASSIDY
DAWN GRAVES

ART HEARTS

Art This Week: A Mexican Collaboration and the Perils of Cross-Border Travel



Ahmad Hammoud, *Passport for the Stateless*, 2016, Color-printed paper booklet, 4.9 × 3.5 in

Ahmad Hammoud, *Passport for the Stateless*, 2016, Color-printed paper booklet, 4.9 × 3.5 in

Occupational Hazards

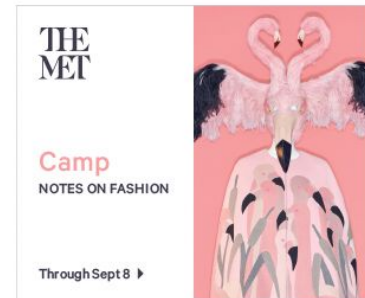
Opening Wednesday, May 29 at *apexart*, 6 pm to 8 pm. On view through July 27.

The central concept of apexart's latest exhibition is pieces of art that have been "lost, damaged, or destroyed when shipped through the Middle East," a theme that seems so specific it might seem like it could only result in a meager showcase. As the show contains over a dozen artists from all over the world, particularly those with ties to places like Iran, Kuwait, and Palestine, it is apparent that art in international transit can meet this fate more frequently than one might surmise. This can encompass more mundane wear and tear from the everyday bumpiness of travel and the customs process, or it can have more complicated, insidious origins, such as the time artist Ahmad Hammoud's passport-esque creation got torn up and marked with red pen for daring to remotely resemble a travel document.



Search

ADVERTISEMENT



MOST POPULAR TOPICS

- [Fashion + Shopping »](#)
- [Arts + Culture »](#)
- [Housing + Development »](#)
- [Crime + Community »](#)
- [Bars + Restaurants »](#)
- [Housing + Development »](#)
- [Crime + Community »](#)
- [Bars + Restaurants »](#)

FOLLOW US ON



ABOUT B + B

Bedford + Bowery is where downtown Manhattan and north Brooklyn intersect. Produced by NYU's Arthur L. Carter Journalism Institute in collaboration with *New York* magazine, B + B covers the East Village, Lower East Side, Williamsburg, Greenpoint, Bushwick, and beyond. Want to contribute? Send a tip? [E-mail the editor.](#)