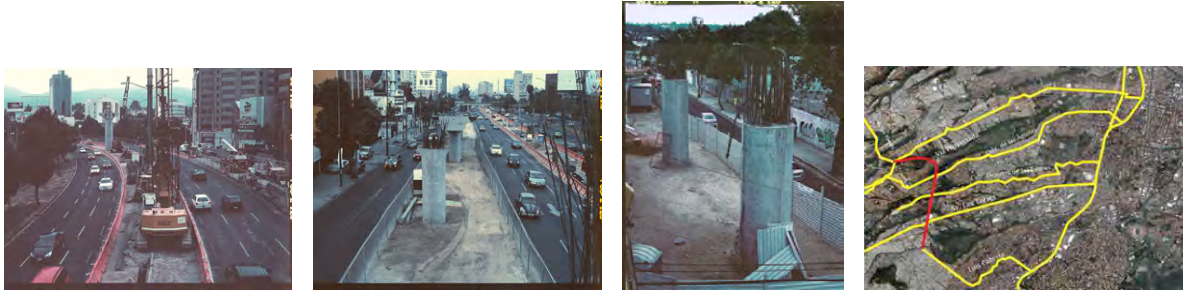


apexart

2012 Franchise Proposal by
Jaya Klara Brekke and Julio Salazar
Franchise location: Mexico City, Mexico



FLESH AND CONCRETE Large infrastructure projects embody visions of an urban future. They literally shape cities in the most extreme ways, visually, socially, financially and politically. Through the destruction necessary for their completion comes a change to city life that (re-)enforces certain life-styles while making others redundant or impossible. But these structures also contain within them shadows of their own demise: The multiple contemporary environmental and economic crises inspire apocalyptic images, but also imaginations of new ways of living and their equivalent spatial organization. As more and more people move to cities the priorities made and stories told about the future of urban life become increasingly important as well as complex. The Supervia Sur-Poniente highway project in Mexico City is an extension of the city's already large, but often congested, network of roads and highways. It is a highly contested infrastructure project that will connect some of the city's wealthiest neighborhoods in the South-West of the city with the 'Periferico' ring-road, crossing the protected natural resort of 'Torres de Potrero', and will implicate the demolishing of several low-income areas. Neighborhood-based protests and campaign groups have formed to resist the construction project, which nevertheless is moving forward to completion. The proposed exhibition will take place on the building site of the Supervia itself just before the road is opened in the Spring of 2012 (permission from the construction company has already been granted). It will explore the various imagined futures of the city that are embodied in the groups and movements that have sprung up in resistance to the road, as well as the visions of modernity, development and progress that the road itself claims to represent. A series of ongoing interviews with residents in the area as well as photographic documentation will form the material basis, along with the architecture itself, from which the artists will work. The aim is to unpack through the work of the artists the contradictions inherent in the visually impressive but, on a local community level, socially destructive process of infrastructure development. Three sites along the highway have been chosen: the bridge of over Avenida las Águilas, and the two tunnels Túnel de Luis Cabrera a San Bernabé and Túnel de San Bernabé a Avenida Las Torres. The invited artists are: Diana Quintero, Francisco Ugalde, David Cruz, Erick Diego, Daniel Monroy and Ale de la Puente. They have been posed the challenge of producing site-specific works that engage with a bodily experience as well as the social, political and economic representation of this infrastructure project highlighting questions of urban development, power and visualisation. They all share an understanding of architecture, but otherwise span disciplines from video to sculpture and performance.